

OLD NORTH BRIDGE

## TOWN OF CONCORD

TOWN HOUSE - P.O. BOX 535  
CONCORD, MASSACHUSETTS 01742

Mr. Todd Richards  
Assistant Director of Fisheries  
Division of Fisheries and Wildlife  
Department of Fish and Game  
1 Rabbit Hill Road  
Westborough, MA 01581

April 15, 2021

Re: Fish Stocking at White Pond

Dear Mr. Richards,

The Concord Select Board submitted a request to stop rainbow trout stocking in White Pond and stock only other types of fish. The reasons for that request are outlined in our letter sent August 21, 2021. See Attachment 1 below.

We did not receive a response from you or your office and therefore are re-submitting our request. We were disappointed to learn that White Pond was just recently stocked in March 2021 with only Rainbow Trout despite our request. We are requesting that the next scheduled stocking not include Rainbow trout.

Please advise at your earliest convenience.

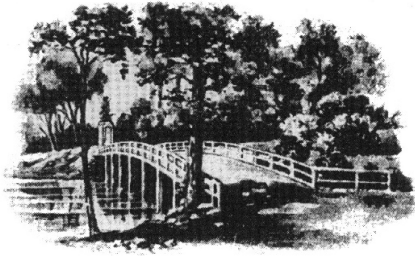
On behalf of the Concord Select Board and the White Pond Advisory Committee, I am sincerely,

---

Michael Lawson, Chair  
Concord Select Board

cc: Senator Michael Barrett  
Representative Tami Gouveia

## Attachment 1



OLD NORTH BRIDGE

### TOWN OF CONCORD

TOWN HOUSE - P.O. BOX 535  
CONCORD, MASSACHUSETTS 01742

Mr. Todd Richards  
Assistant Director of Fisheries  
Division of Fisheries and Wildlife  
Department of Fish and Game  
1 Rabbit Hill Road  
Westborough, MA 01581

August 21, 2020

Re: Fish Stocking at White Pond

Dear Mr. Richards,

Like other ponds in the region, White Pond has recently begun to experience annual incidences of toxic blue-green algal blooms. The pond is regularly used for swimming, boating, fishing, nature study, and meditation. As you know, it is stocked regularly with trout in spring and autumn by the state.

The White Pond Advisory Committee (WPAC) has advised the Concord Select Board that fish stocking is one of the contributors to phosphorus loading in the pond. The 2015 White Pond Watershed Management Plan (<https://concordma.gov/740/White-Pond-Watershed-Management-Plan>) estimated that trout contribute approximately 2% of the phosphorus loading at the pond. However, the WPAC has also advised that rainbow trout, which are regularly stocked in the pond, consume zooplankton that would otherwise consume cyanobacteria, exacerbating the severity of toxic blue-green algal blooms.

We request that state consider a reduction to fish stocking. Given warming winters, and less ice cover observed at the pond over the past several years, perhaps the fall stocking should be abandoned. We further request that the state evaluate the potential effects that stocking the pond with rainbow trout may have on blue-green algae.

The Town has undertaken measures to reduce phosphorus loading into the Pond, including a

recent slope restoration project at Sachem's Cove, at the southern end of the pond, and has plans underway to control stormwater runoff from the fish and boat access road. We look forward to working with you to improve the water quality at White Pond, so that its beauty may be shared with future generations.

On behalf of the Concord Select Board, I am, sincerely,

---

Michael Lawson, Chair  
Concord Select Board